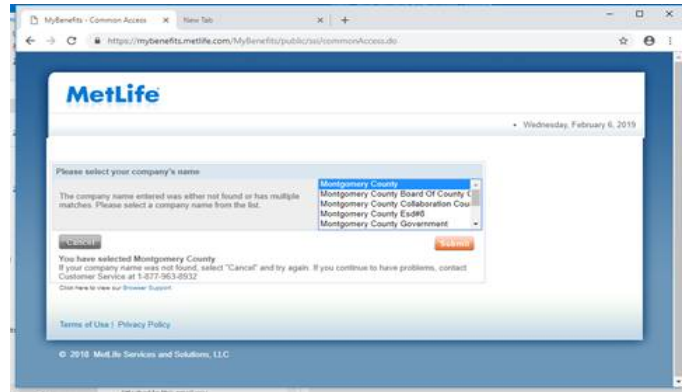
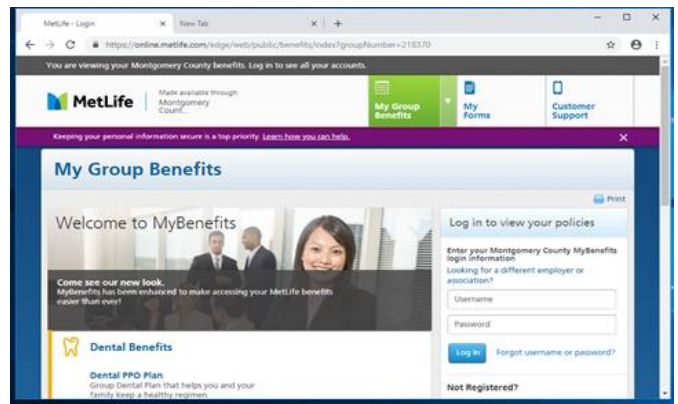


Montgomery County, Texas - MetLife Dental and Vision login instructions.

www.mybenefits.metlife.com Type Montgomery County in the box that says Enter Company Name.



Register Now to access your MetLife Benefits Accounts or Login if you have already registered an account.



The dental and vision plans you chose to participate on for the 2019 plan year will appear like this. (This page is not specific to you and just used as an example)

You can select the dental plan or the vision plan listed in blue and it will direct you to your benefits and allow you to print a card. Take this card with you to your appointment.

